

## FREQUENCY INDEPENDENT DATA

Description: omnidirectional coaxial dipole  
 Frequency: 326-353 MHz, 336-364 MHz,  
 380-400 MHz, 405-440 MHz,  
 440-475 MHz, 830-890 MHz,  
 880-960 MHz

Impedance: 50 ohm  
 Gain: 2 dBi

H -3 dB: 81°  
 E -3 dB: 81°  
 F/B: 0 dB

Polarization: vertical  
 Connector: N-/ TNC-/ 7/16-female  
 VSWR: < 1.5

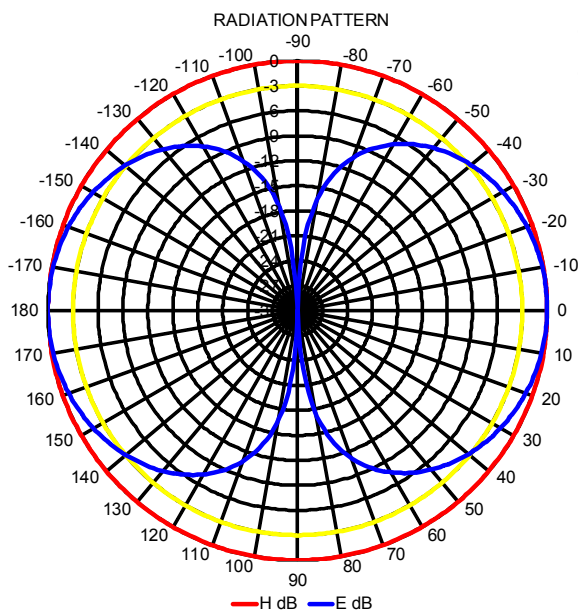
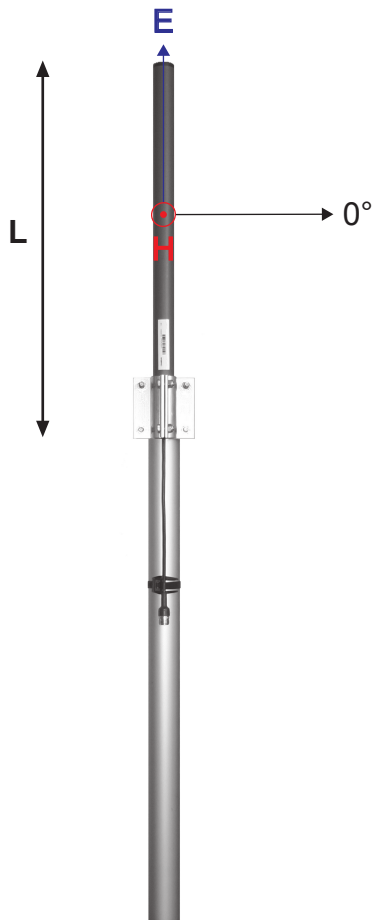
Radome: UV resistant ABS/FG,  
 RAL 7012, PU foam filling

Radiator: copper  
 Attachment: Ø 35-60 mm, aluminium alloy  
 bracket, stainless steel V-  
 bolts and self-locking nuts

Lightning  
 protection: DC-short circuited

Temperature: -40°C - +80°C  
 IP: 67

- combination of durability, light weight and low wind load
- radome enclosed radiator
- IP67 proof construction
- all electromechanics moulded inside of closed cell PU foam
- DC shorted feed point
- integrated impedance compensation
- integrated RF choke



**RoHS**  
Compliant

**CompleTech**  
ComAnt<sup>®</sup>-antennas by CompleTech, Finland